

# APARTMENT 22

# PARK MODERN

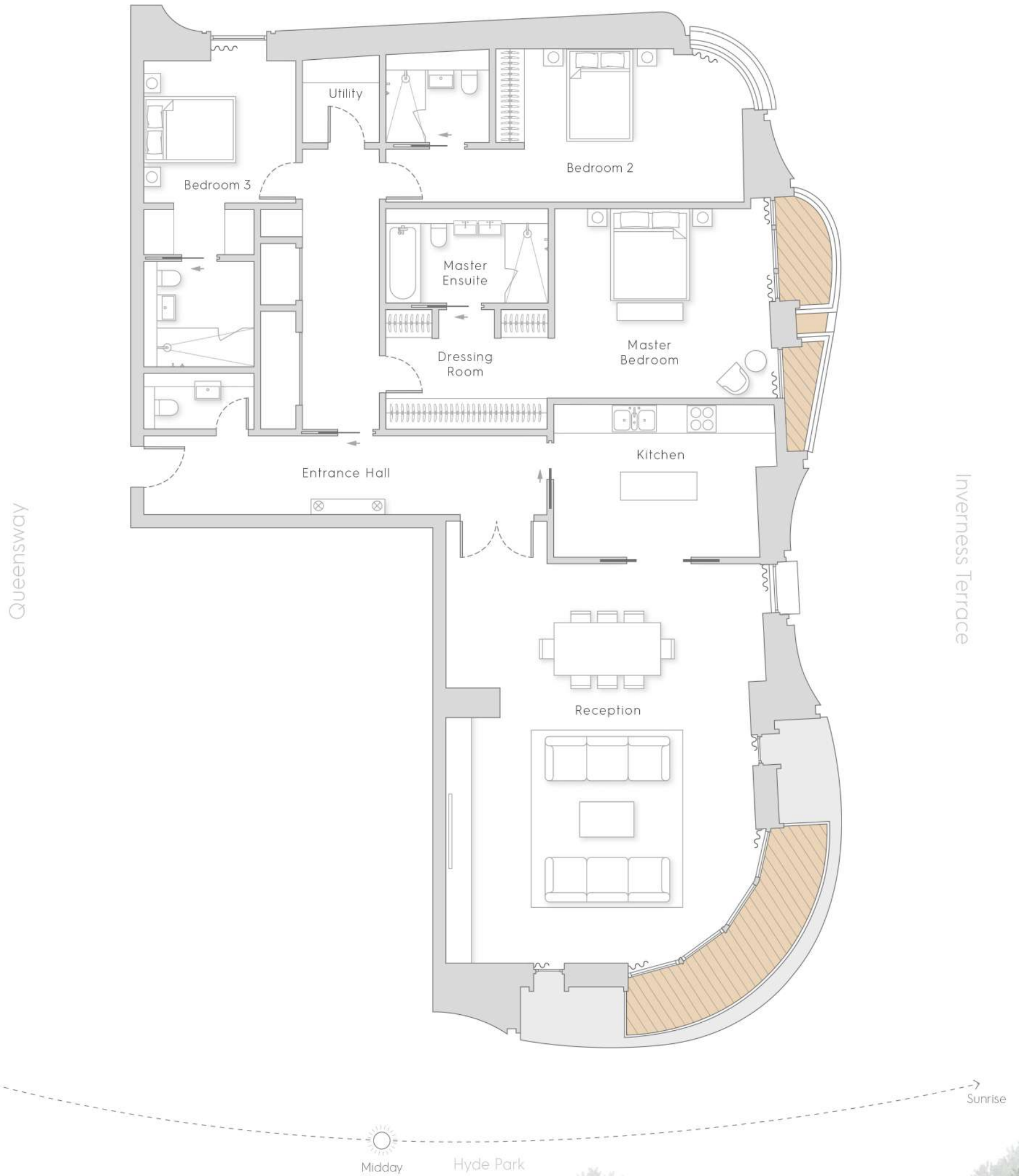
Hyde Park, London

3 Bedrooms

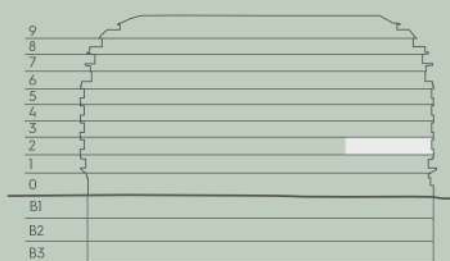
Level 2

GROSS INTERNAL AREA 217 SQ M / 2,325 SQ FT

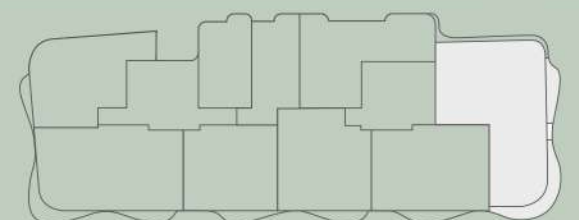
TERRACES 20 SQ M / 209 SQ FT



Living/dining	7.31 x 9.07m	24' x 29'9" ft
Kitchen	4.85 x 3.44m	15'11" x 11'3" ft
Master Suite	4.41 x 4.95m	14'6" x 16'3" ft
Master Ensuite	3.87 x 1.85m	12'8" x 6'1" ft
Bedroom 2	4.80 x 3.49m	15'9" x 11'5" ft
Bedroom 3	3.31 x 3.42m	10'10" x 11'3" ft



Floor Locator - Floor 2



Floor plate - Floor 2

The areas and dimensions provided on these floorplans are subject to design development and are approximate and for guidance only at this stage. Further dimensions, including clear heights of windows and ceilings, balcony and terrace areas may vary in size and are subject to design development. Please speak to the sales team for details. Indicative areas are measured as gross internal areas (GIA) using the RICS code of measurement, 6th Edition.

Sunrise/sunset is a indicative guide only and is not to be used for exact positioning of the sun in relation to the apartment.

Scale 1:100

