

APARTMENT 49

PARK MODERN

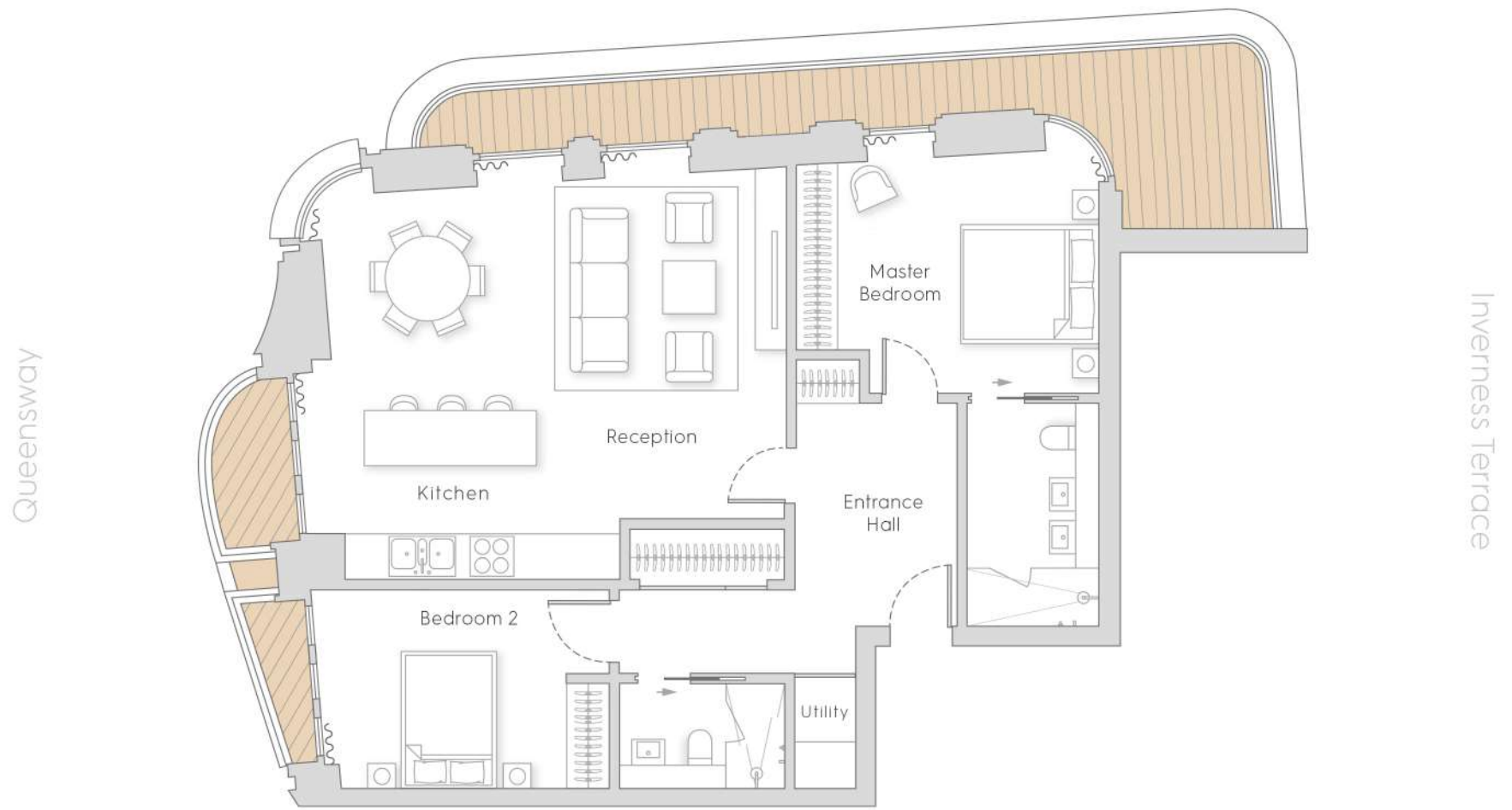
Hyde Park, London

2 Bedrooms

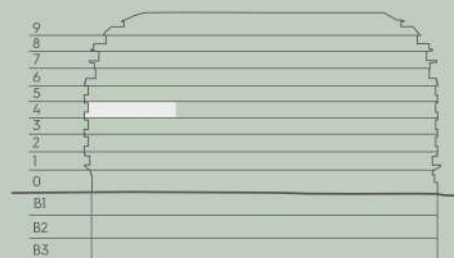
Level 4

GROSS INTERNAL AREA 100 SQ M / 1,067 SQ FT

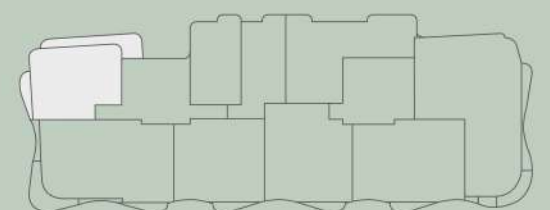
TERRACES 31 SQ M / 329 SQ FT



Living/dining/kitchen	7.49 x 6.25m	23'6" x 16'9" ft
Master Suite	4.44 x 3.66m	14'2" x 12'11" ft
Master Ensuite	1.65 x 3.31m	5'5" x 10'10" ft
Bedroom 2	4.40 x 2.78m	14'5" x 9'1" ft



Floor Locator - Floor 4



Floor plate - Floor 4

The areas and dimensions provided on these floorplans are subject to design development and are approximate and for guidance only at this stage. Further dimensions, including clear heights of windows and ceilings, balcony and terrace areas may vary in size and are subject to design development. Please speak to the sales team for details. Indicative areas are measured as gross internal areas (GIA) using the RICS code of measurement, 6th Edition.

Sunrise/sunset is a indicative guide only and is not to be used for exact positioning of the sun in relation to the apartment.

